

## Videoscopy for internal inspection



- **Visual inspection at un approachable location**
- **Boiler headers**
- **Turbine components**
- **Heat exchanger tubes**
- **Pipe line**
- **Vessel and reactor**

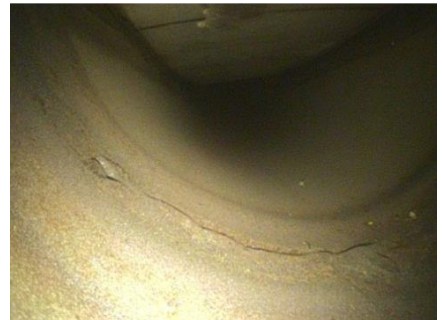


Image Sensor	High-Resolution color SUPER HAD CCD image
Display Size	5.0" (12.7cm) TFT VGA color LCD
Zoom	3.5X (Digital)
Direction of view	0° & 90° Field of View: 60°, Depth of Field: from 5mm
Probe diameter/length	8 mm/ 7.5 meters
Articulation	4-way & 360degree All-Way Tip articulation control
Illumination type	High-Power LED with high transmission fiber optics